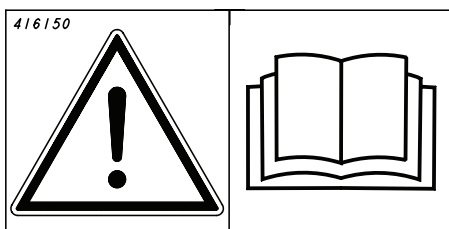


AgLeader Integra  
Terminal Software: 7.1.0





Denna Quick Start ersätter inte instruktionsboken!  
Denne Quick Start erstatter ikke instruktionsbogen!  
Denne Quick Start erstatter ikke instruksjonsboken!  
Tämä Quick Start-pikaopas ei korvaa käyttöohjekirjaa!  
This Quick Start guide does not replace the instruction manual!  
Diese Quick Start-Anleitung ist kein Ersatz für das Handbuch!  
Ce guide Quick Start ne remplace pas le manuel d'instructions!  
Instrukcja szybkiego uruchomienia nie zastępuje instrukcji obsługi,  
którą należy przeczytać przed rozpoczęciem użytkowania  
maszyny. Šis ātrais mācību materiāls neaizvieto lietošanas  
instrukciju!  
Šis „Quick Start“ vadovas nepakeičia instrukcijas!

See kiirjuhend Quick Start ei asenda kasutusjuhendit!  
Návod Quick Start nenahrazuje návod k použití!  
Ez a Quick Start útmutató nem helyettesíti a Használati útmutatót!  
La presente guida Quickstart non sostituisce il manuale di  
istruzioni! Это руководство «Quick Start» не заменяет основное  
руководство по эксплуатации!  
Ta vodnik Quick Start ne nadomešča priročnika z navodili!  
Този бърз справочник не заменя наръчника!  
Ο παρών οδηγός Γρήγορης εκκίνησης δεν αντικαθιστά το εγχειρίδιο οδηγιών!

# Väderstad ISOBUS implement with AgLeader Integra

**NOTE!** *This document is a quick guide only and requires that the Väderstad implement is connected correctly and that the user possesses some basic knowledge of how this display and its functions is working. For further information regarding display functions we refer to the user manual provided by the manufacturer.*

**TIP!** Some chapters in this guide refers to the displays user manual. Before you use this guide in field, please read through this guide completely and make sure you have access to the required documentation.

## 1. Introduction

When installing and running a Väderstad ISOBUS implement with a ISOBUS terminal, it is important to follow and complete the steps in this guide.

This document is a quick guide only and requires that the Väderstad implement is connected correctly to the display and that the user possesses some basic knowledge of how this display and it's functions is working. For further information regarding display functions we refer to the operators manual provided by the manufacturer.

Before you proceed to the next chapter, please ensure that both the terminal software and the Väderstad software matches the one specified on the Väderstad homepage.

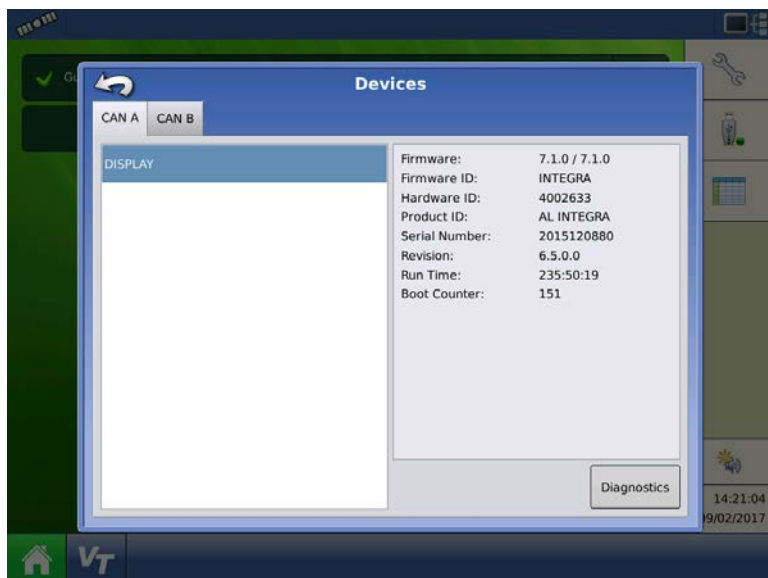
<http://www.vaderstad.com/products/vaderstad-e-services/isobus>

## 2. Check the terminal software version

It's important that the display software matches the one tested from Väderstad. If the display software separates from the one tested, some functionality may not work as expected.

To view the display software version, from the main screen press the button(diagnostics) in the upper right corner. **Diagnostics -> CAN -> CAN A tab.**

Check the row saying "*Firmware:* ".



Screen 1. Display software version screen.

If the software version is incorrect, please contact your local AgLeader dealer. If the version matches please continue to the next step.

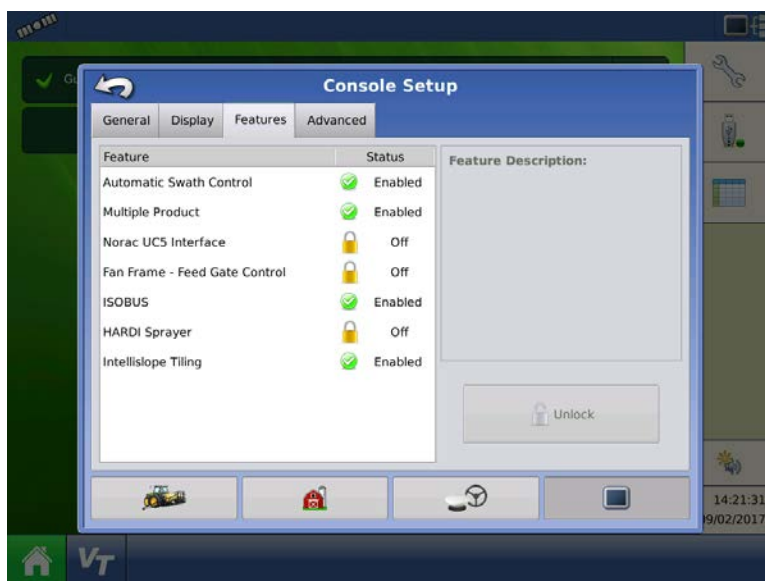
## 3. Check Activations

In order for “Section Control” and/or “Variable Rate” to work the display must be unlocked with a specific license. If the display is locked, please advise your local display reseller in order to purchase this activation.

To view the display unlocks, from the main screen go to:

**Setup**  -> **Console Setup** -> **Features** tab

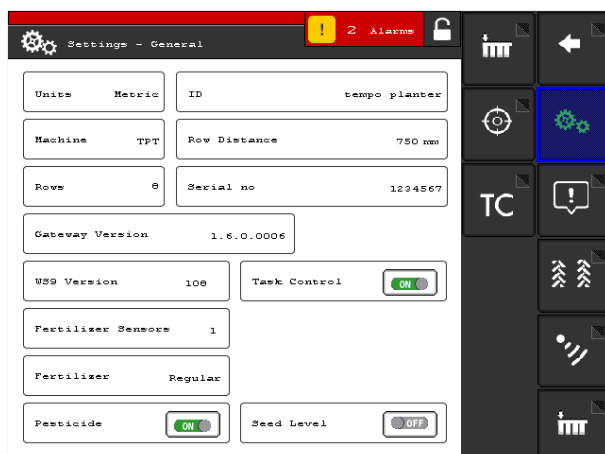
Make sure “Automatic Swath Control” is enabled. For multiple product use, “Multiple Product” must be enabled.



Screen 2. Display activations

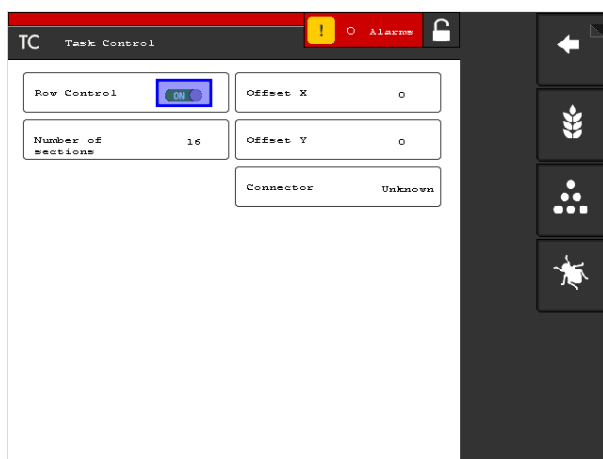
## 4. Activating Task Controller in Väderstad User Interface (UI)

Open the “Väderstad UI”. In the Väderstad UI, press “Settings”, on the next screen press “General Settings”. Toggle the Task Control button to “ON” (screen 3).

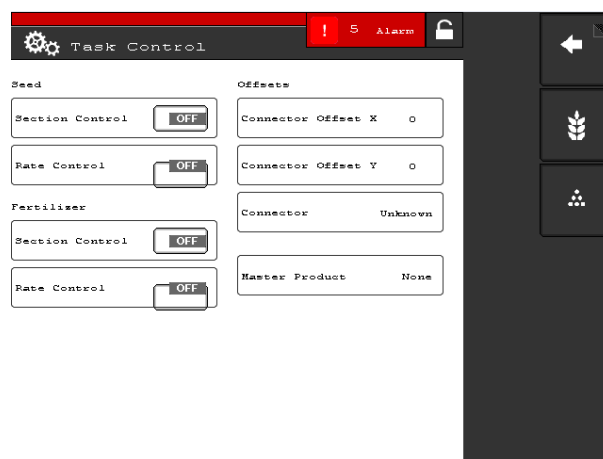


Screen 3. Task Controller ON

From the general settings, press the “TC-submenu” button. In this menu you’re telling the display what product to be controlled and also what functions to be used by turning “Section Control” and/or “Variable Rate” to ON or OFF. In this menu you’re also able to set the implement offsets and ON/OFF timers for each product. For further information regarding these settings please read the “Task Control”-chapter in the Väderstad E-Control user manual.





Screen 4. TC- Submenu Tempo



Screen 5. TC-Submenu RD/RDA

When all settings is set and the TC-submenu is exited the Task Controller object pool is updated and sent to the display. After 20 seconds the implement profile is updated with the latest settings.


## 5. Creating a implement on the display

From the main screen, press the setup button . On the next screen press the  button to start the configuration wizard. The configuration consists of a number of wizards, please follow the steps for each screen shown. The important steps is marked with (!) and described below in this guide. These settings must be correctly configured in order for the configuration to work.

### Step 1: Configuration type

(!) If the Seed-product is enabled in any way (see step 4 of this guide) the choice on this screen should always be “Planting”. If you disable Seed (see step 4 of this guide) and only want to control Fertilizer or Biodrill, you will have to choose “Application” at this point. This is very important, otherwise the display won’t recognize the implement connected.

### Step 3: Implement

Press the  button to start the implement wizard. Please follow the steps given in the wizard. Below is the important (!) steps described, these must be configured correctly. Otherwise the display won’t recognize the implement.

### Step 4: Implement Type

(!) Choose the implement type, “Planter” for Tempo and “Drill” for Rapid.

### Step 9: Seed Rate Controller

(!) Choose “Generic”.

### Step 11: Section Count

(!) Choose the amount of sections for the product you're configuring.

If you configuring the product Seed ("Planting") please follow this step:

- If your configuring a Tempo, enter the number of sections matching the number of rows.*
- If you're configuring a drill with half-machine clutches, enter 2 sections.*
- If you're configuring a drill without half-machine clutches, enter 1 section.*

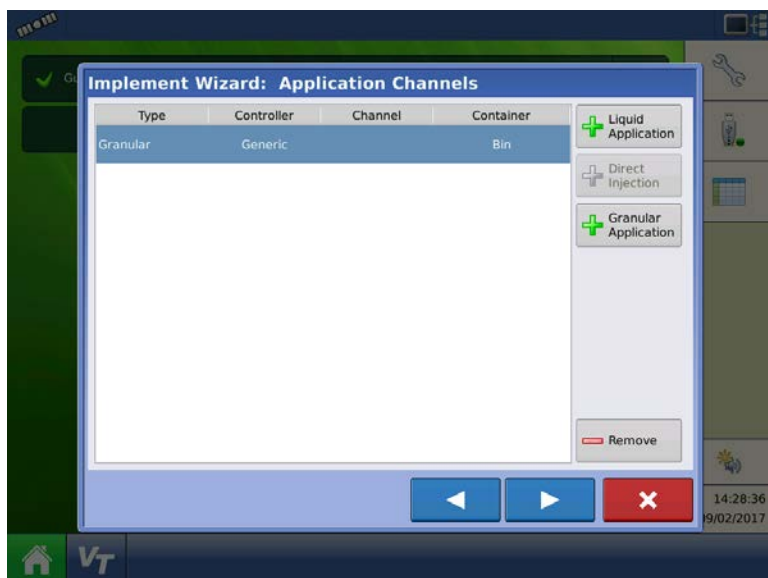
If you configuring the product Fertilizer and/or BioDrill ("Application") please follow this step:

- If your configuring a Tempo, enter 1 section.*
- If you're configuring a drill with fertilizer and half-machine clutches, enter 2 sections.*
- If you're configuring a drill with fertilizer but without half-machine clutches, enter 1 section.*
- If you're configuring a drill with biodrill, enter 1 section.*

### Step 12: Application Channels

(!) If you intend to control more than one product this must be added at this step. If you only want to control the already configured product please continue to the next wizard step.

If more than one product is to be controlled, press the "+ Granular Application"-button and complete the wizard shown. Once the wizard is finished you will return to the screen shown below, if yet another product is to be controlled, reproduce step 13-16 in this guide. When finished, please continue to the next wizard step.



Screen 6. Two products configured.

### Step 13: Rate Controller (Multiple products)

(!) Choose "Generic"

### Step 14: Application Channels (Multiple products)

(!) Always choose 1.

## Step 15: Container (Multiple products)

Enter the container capacity. Is only needed in order to continue the wizard, doesn't exactly have to match the implement container size.

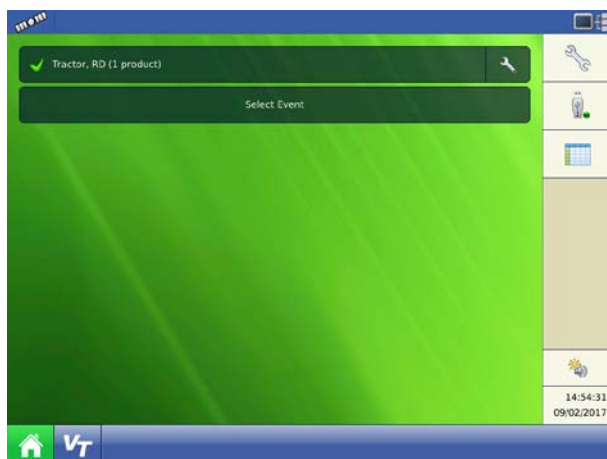
## Step 16: Section Count (Multiple products)

(!) Choose the amount of sections for the product you're configuring. For further information see step 9 in this guide.

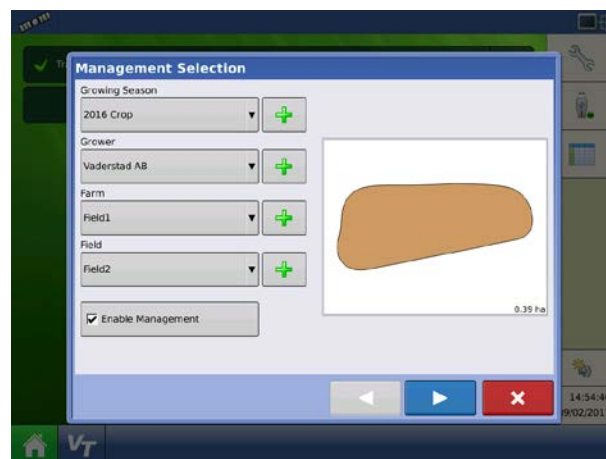
Complete the remaining steps show in the wizard. Once the configuration wizard is finished you will return to the display main screen. For further information on how to configure a implement, see the ["Configuration Button \(21\)"](#)-chapter in the operators manual.

## 6. Create job and/or enter necessary documentation settings

From the home screen, at the top, please choose the "Equipment configuration" you created in the previous step of this guide. A green checkmark will show that the configuration matches the Väderstad implement connected. Press "Select Event" to open a field.



Screen 7. Successful implement configuration



Screen 8. Management selection

At the management screen you will be asked to choose farm and field for the current operation. For further information on how to set that up, see the ["Management Button \(30\)"](#)-chapter in the operators manual.

## 8 Use of "Section Control"

### 8.1 Create field and field boundaries

If section control is to be used when exiting field and/or headland boundaries these must be defined. For further information, please see the ["Field Tab \(54\)"](#)-chapter in the operators manual.

### 8.2 Section Control Settings

If section control is to be used when exiting field and/or headland some settings must be set. For further information, please see the ["Automatic Swath Control \(169\)"](#)-chapter in the operators manual.



## 9 Use of “Variable Rate”

### 9.1 Import/Load shapefile

If “Rate Control” is to be used, a prescription file must be used. For further information, please see the ["Loading prescriptions \(99\)"](#)-chapter in the operators manual.

## 10 Attachments

Full version of the Integra operators manual (PN 4002083 Rev. O).

<https://support.agleader.com/kbp/index.php?View=afile&EntryID=1543&AttachID=3742>

Väderstad E-Services Rapid

<http://pdmlink.vaderstad.com/openext.aspx?id=10065801>

Väderstad E-Services Rapid A

<http://pdmlink.vaderstad.com/openext.aspx?id=10043228>

Väderstad E-Services Tempo L

<http://pdmlink.vaderstad.com/openext.aspx?id=10064506>

Väderstad E-Services Tempo T, Tempo F, Tempo V, Tempo R, FH

<http://pdmlink.vaderstad.com/openext.aspx?id=10038077>

Väderstad E-Services Spirit och Spirit R

<http://pdmlink.vaderstad.com/openext.aspx?id=10052287>



Väderstad AB  
SE-590 21 VÄDERSTAD  
Phone: +46 142-820 00  
[www.vaderstad.com](http://www.vaderstad.com)

